

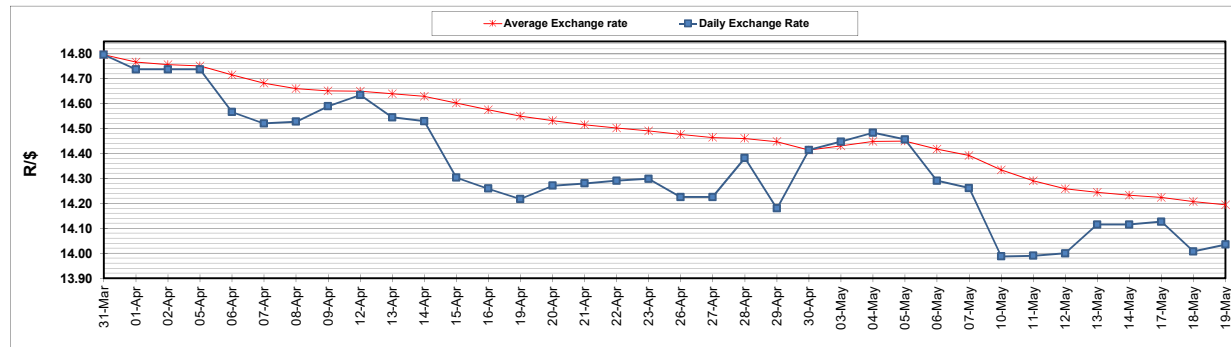
	PETROL 95 ULP	PETROL 93 ULP & LRP	DIESEL 0.05%	DIESEL 0.005%	ILL. PAR.
GAUTENG PUMP PRICE (SA c/l) AS FROM 05/05/2021	1,723.000	1,701.000	-	-	-
WHOLESALE PRICE (SA c/l) AS FROM 05/05/2021	-	-	1,446.620	1,450.020	857.488
SINGLE NATIONAL MAXIMUM RETAIL PRICE	-	-	-	-	1,076.000
BASIC FUEL PRICE - 19/05/2021 (SA c/l)	698.897	688.498	673.961	678.643	656.042
PRESS RELEASE CONTRIBUTION TO BFP 05/05/2021 - 19/05/2021 (SA c/l)	727.170	715.170	659.630	663.030	644.128
UNIT OVER/(UNDER) RECOVERY - 19/05/2021 (SA c/l)	28.273	26.672	(14.331)	(15.613)	(11.914)
AVERAGE BASIC FUEL PRICE 30/04/2021 - 19/05/2021	724.672	713.851	687.133	691.184	674.151
AVERAGE UNIT OVER/(UNDER) RECOVERY 30/04/2021 - 19/05/2021	4.427	3.248	(20.860)	(21.725)	(25.094)

ANALYSIS MOVEMENT OF AVERAGE OVER/(UNDER) RECOVERY

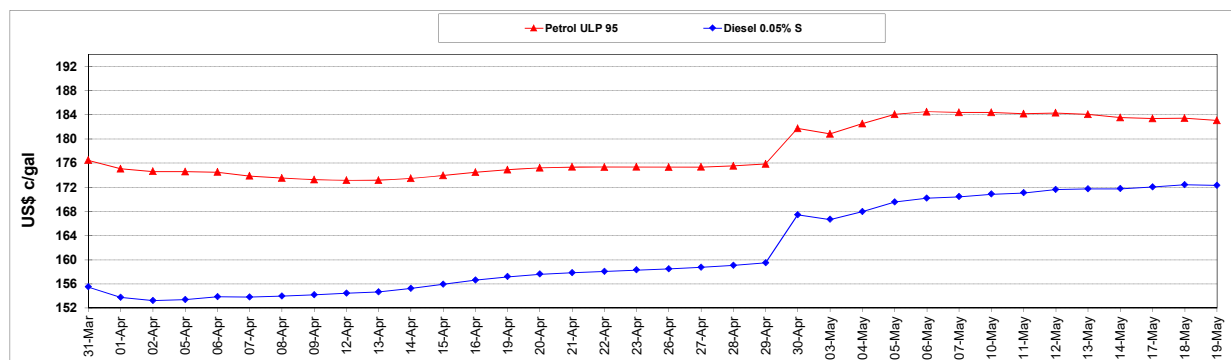
	PETROL 95	PETROL 93	DIESEL 0.05%	DIESEL 0.005%	ILL. PAR.
- MOVEMENT IN INTERNATIONAL PRODUCT PRICES	(8.489)	(9.475)	(33.107)	(34.044)	(37.110)
- MOVEMENT IN EXCHANGE RATE	12.916	12.723	12.247	12.319	12.016
AVERAGE UNIT OVER/(UNDER) RECOVERY 30/04/2021 - 19/05/2021	4.427	3.248	(20.860)	(21.725)	(25.094)

R/\$ EXCHANGE RATE - (R/\$14.0350- 19/05/2021)

EXCHANGE RATE USED IN BASIC FUEL PRICE



INTERNATIONAL PRODUCT PRICES OF BASKET USED IN BASIC FUEL PRICE



BASIC FUEL PRICE IN SA CENTS PER LITRE

